

## DIVERTER BLOCK

- Ideal for branching off primary series air prep manifold to add additional products, such as adding another regulator or dividing lubricated and un-lubricated compressed air lines
- 1/8 or pad mount interface ports on top of product for adding pressure switches/sensors or other condition monitoring devices
- 1/4 ports (Series 651), 3/8 ports (Series 652), or 1/2 ports (Series 653) on the front and back provide additional flexibility to attach or branch off the main manifold. It can also be used to feed auxiliary air to air prep assemblies that require additional air capacity, such as a bank of manifold regulators



Performance Data				
Series		651	652	653
Port Sizes	Left, Right & Bottom	1/4 & Flanged	1/2 & Flanged	1 & Flanged
	Front & Back**	1/4	3/8	1/2
Thread Type		NPTF, G & Rc		
Top Port (for Pressure Switch/Pressure Sensor)		1/8*		
Maximum Pressure PSIG (bar)		232 (16)		290 (20)
Fluid		Air or Inert Gas		
Weight lbs. (kg)		0.41 (0.188)	0.73 (0.331)	1.67 (0.753)

\* Different for EU

\*\* To access front & back ports remove covers and plugs

Materials in Contact with Fluid	
Body	Aluminum

## How to Order

### Diverter Block

**Port Type**

8 = NPTF  
1 G = ISO 228/1-G  
J = ISO 7/1 Rc

**Product Series**

651  
652  
653

**Revision**

A

**Product Type**

D = Diverter Block

**Options**

A00 = No Options  
101 = Side Mounting Brackets  
117 = ATEX Zones 1-21

**Pressure Switch Interface**

C = Pad Mount (Europe only)  
T = 1/8 (US only)

**Port Size**

2 = 1/4 (Series 651)  
4 = 1/2 (Series 652)  
6 = 1 (Series 653)

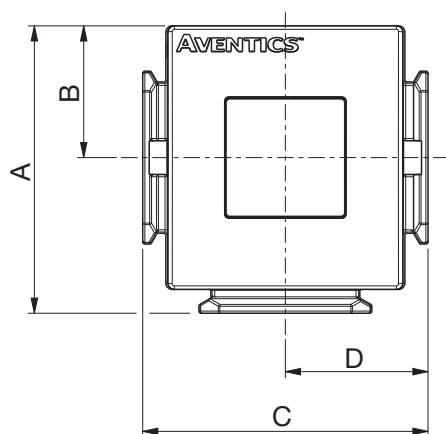
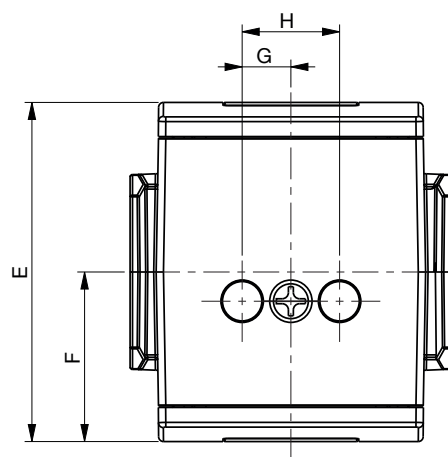
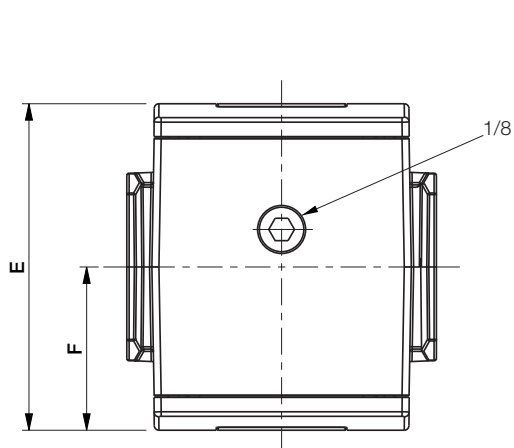
8 651 A D 0 0 2 T A00 0 0

1 Conforms to ISO standards 1179-1

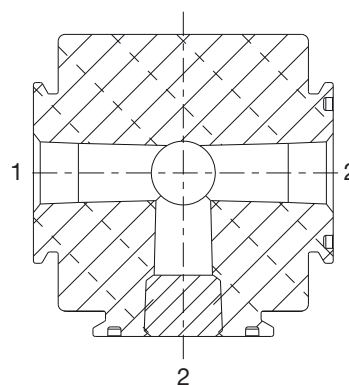
2 If multiple options are required, please use the online CAD configurator on the website to generate the part number ([www.emerson.com](http://www.emerson.com)), or consult factory

SERIES  
**651/652/653**

Dimensions: mm (inches) Series 651/652/653 Diverter Block



**Cross Section -  
Series 651/652/653  
Diverter Block**



	A	B	C	D	E	F	G	H
<b>651</b>	54.4	25	50	25	58	29	10	20
	(2.14)	(0.98)	(1.97)	(0.98)	(2.28)	(1.14)	(0.39)	(0.79)
<b>652</b>	66.5	30.5	66	33	70	35	10	20
	(2.62)	(1.20)	(2.60)	(1.30)	(2.76)	(1.38)	(0.39)	(0.79)
<b>653</b>	89.5	41	90	45	93	46.5	10	20
	(3.52)	(1.61)	(3.54)	(1.77)	(3.66)	(1.83)	(0.39)	(0.79)